



# Integrating the Smarthome Industry with ETA Certifications

## **ETA RESI CERTIFICATION PROGRAMS:**

**RESI (Basic)**

**RESI Master (RESIma)**

**Audio/Video (AV)**

**Computer Networking (CN)**

**Security-Surveillance (SS)**

**Switch Closed-Circuit TV (SCCTV)**

**Environmental Control (EC)**



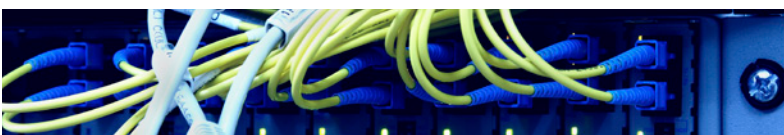
**Residential Electronics Systems Integrator** is a professional certification for those who design and oversee the installation and integration of electronics systems in residences and light commercial buildings. The objective of the Integrator is to produce a residential or light commercial electronics systems package that will allow all data, control, and communication signals to be integrated at the premise controller and converged into one secure cohesive communication stream, to either be used within the premise or to be passed back and forth through the gateway. The Integrator should be proficient in the many protocols used over diverse media to communicate with and control residential and light commercial electronics systems.

### **MASTER RESI Integrator**

The MASTER RESI certification prerequisites include successfully completing the core RESI certification requirements plus holding each of the five RESI endorsements.

**View all of the ETA RESI competencies  
online at [www.etainternational.org](http://www.etainternational.org)**

5 Depot Street, Greencastle, Indiana 46135  
800.288.3824, [eta@eta-i.org](mailto:eta@eta-i.org)



**Over the last five to eight  
years, homes have been  
readied for broadband use,  
and there will be close to 1.2  
billion connected consumer  
electronics devices in use by  
2013 (iSuppli)**

### **About ETA International:**

Founded in 1978, the Electronics Technicians Association, International is a not-for-profit, professional association committed to providing accredited certifications that meet industry standards. Today, ETA has issued over 100,000 technical certifications in 50 different certification programs. These certified individuals are employed by more than 840 businesses/organizations across the world. The association is comprised of over 4,000 members, 700 Subject Matter Experts (SME's) serving on various Industry Advisory Committees and 1,000 Exam/Certification Administrators (CA's).